

MR imaging findings of glutaric aciduria type II

Mumtaz H A, Gupta V, Singh P, Marwaha R K, Khandelwal N

ABSTRACT

Glutaric aciduria type II, also known as multiple acyl coenzyme A dehydrogenase deficiency, is an autosomal recessive, mitochondrial organic acid disorder that impairs electron transfer flavoprotein (ETF) or ETF-ubiquinone oxidoreductase, and causes a defect in flavin metabolism or transport. It has a heterogeneous clinical presentation, with at least three different phenotypic appearances. Magnetic resonance (MR) imaging of the brain in this disorder shows a T2-weighted prolongation in the corpus striatum, putamen, caudate nucleus, middle cerebral peduncles and splenium of the corpus callosum. We report a seven-month-old male Caucasian child who presented at the paediatrics emergency department with a sweetish breath. He was clinically diagnosed with diabetic ketoacidosis. However, on MR imaging, brain evaluation and laboratory analysis, he was found to have glutaric aciduria type II.

Keywords: magnetic resonance imaging, multiple acyl coenzyme A dehydrogenase deficiency

Singapore Med J 2010; 51(4): e69-e71

INTRODUCTION

Glutaric aciduria type II, also known as multiple acyl coenzyme A dehydrogenase deficiency is a metabolic disease that is inherited in an autosomal recessive manner, and results in an inborn metabolic error of the fatty and amino acids. Variability in the clinical expression and severity of the disease is often seen. Magnetic resonance (MR) imaging of the brain typically shows a T2-weighted hyperintensity of the basal ganglia, along with a bat-wing appearance of widened sylvian fissures.

CASE REPORT

A seven-month-old male Caucasian child presented to the paediatric emergency department with a history of a peculiar sweat sock breath odour for four days, fever for two days and an altered sensorium for the past one day. On examination, acidic breathing and hypotonia were found. Laboratory investigations revealed a high

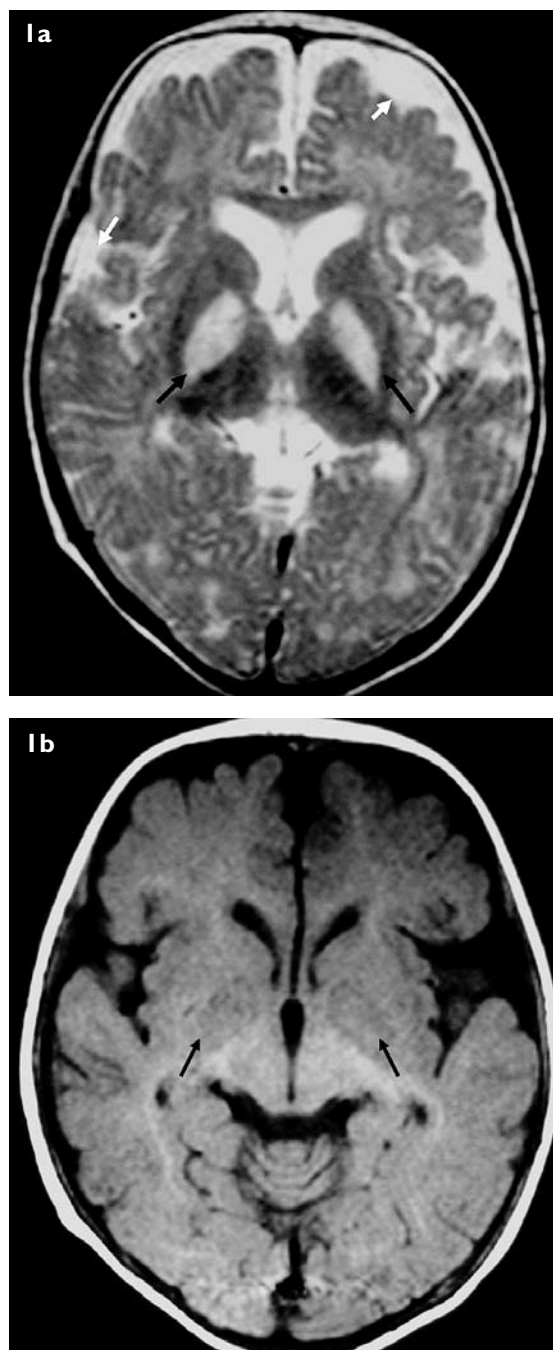


Fig. 1 (a) Axial T2WI MR image shows bilateral symmetrical hyperintensities in both globus pallidi (black arrows) and increased perisylvian and fronto-temporal extra axial cerebrospinal fluid spaces (white arrows). (b) Axial T1WI MR image shows mild hypointensity (arrows) noted in the globus pallidus on both sides.

anion gap and hypoglycaemia. The clinical possibilities of diabetic ketoacidosis or renal causes for electrolyte

Department of
Radiodiagnosis,
Postgraduate
Institute of Medical
Education and
Research,
Sector 12,
Chandigarh 160012,
India

Mumtaz HA, MD
Senior Resident

Gupta V, MD
Assistant Professor

Singh P, MD
Additional Professor

Khandelwal N, MD,
DNB
Professor

Department of
Paediatrics

Marwaha RK, MD
Professor

Correspondence to:
Dr Vivek Gupta
Tel: (91) 172 269 0727
Fax: (91) 172 274 5768
Email: drvivekgupta.
pgi@gmail.com

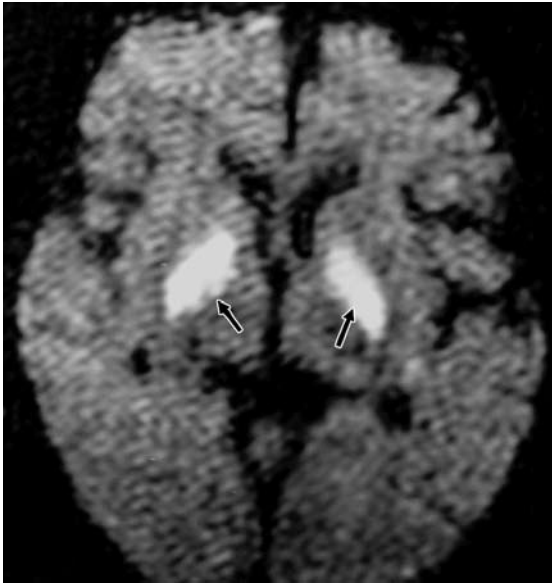


Fig. 2 Diffusion-weighted MR image shows restricted diffusion in the bilateral globus pallidi (arrows).

imbalance were considered. Due to the persistent altered sensorium, MR imaging of the brain was planned.

MR imaging of the brain was performed on a 1.5T MR unit. Axial and sagittal T1-weighted (T1WI) (TR = 102/TE = 14) and T2-weighted (T2WI) (TR = 2735/TE = 102) image sequences were performed with a slice thickness of 5 mm, without any inter-slice gap. In addition, coronal fluid attenuated inversion recovery (FLAIR) and diffusion-weighted imaging were performed. The results revealed bilaterally symmetrical T2WI hyperintensities in the globus pallidus (Fig.1a), which were mildly hypointense on T1WI images (Fig.1b).

On diffusion-weighted imaging, diffusion restriction was observed in the globus pallidus (Fig. 2). The putamen, caudate nuclei and thalami on both sides were normal. Nearly symmetrical enlargement of the perisylvian cerebrospinal fluid (CSF) spaces and frontoparietal subdural spaces was present (Fig.1a). White matter signal intensity was normal. Magnetic resonance spectroscopy (MRS) was attempted but could not be performed satisfactorily, as the child was moving during the MRS examination and could not be sedated for a long time.

Urine biochemistry revealed an excretion of glutaric, propionic and methyl malanoic acids. Based on the presentation, image results and laboratory findings, a diagnosis of glutaric aciduria type II was made.

DISCUSSION

Glutaric aciduria type II is an organic acid disorder, first described by Przyrembel et al in 1976.⁽¹⁾ It is an autosomal recessive mitochondrial disorder that impairs

either the electron transfer flavoprotein (ETF), the ETF-ubiquinone oxidoreductase (ETF-QO), or causes a defect in the flavin metabolism or transport. This will result in the intramitochondrial accumulation of those metabolites that require transfer electrons to flavoprotein.^(2,3)

This inherited disorder has varied and heterogeneous clinical presentations, with at least three different phenotypic appearances. The first type is a neonatal onset disease associated with congenital anomalies that present during the first two days of life. The second is a neonatal onset disorder that is not associated with congenital anomalies and presents within the first week of life. Both the first and second clinical types present with hypotonia, hypoglycaemia, and metabolic acidosis. The third type has a variable course and age of presentation. The patients may be adults and often have intermittent episodes of vomiting and proximal myopathy, along with hypoglycaemia.⁽²⁾

The associated anomalies are facial dysmorphism, bilateral polycystic and dysplastic kidneys, fatty degeneration of the liver and heart, focal cerebral microgyria, hypoplastic lungs, thymic lymphoid atrophy and genitalia abnormalities. The characteristic sweetish or sweat sock odour of patients with glutaric aciduria type II is due to the accumulation of isovaleric acid and its metabolites, and is also found in patients with isovaleric aciduria.⁽⁴⁾

This reported case had no history of an acute hypoxic event or trauma. There was also no previous history of meningitis or encephalitis, or any family history of a similar disease. On clinical examination, the patient was found to have facial dysmorphism. The MR imaging of the brain showed T2-WI prolongation in the corpus striatum, putamen, caudate, middle cerebral peduncles and splenium of the corpus callosum. Neuronal loss in the basal ganglia with gliosis was described for these MR images.^(5,6) Lesions in the bilateral globi pallidi are attributed to focal neuronal loss, hypomyelination or glial scarring. These are seen in inborn errors of metabolism such as canavans disease, metchromatic leucodystrophy, maple syrup urine disease, methylmalonic acidemia and lactic acidemia.⁽⁷⁾ The other causes of globus pallidus T2-WI hyperintensities in infants and children are kernicterus,⁽⁸⁾ chronic carbon monoxide intoxication,⁽⁹⁾ neurofibromatosis type-1,⁽¹⁰⁾ methanol poisoning and Kearns-Sayre syndrome.^(11,12)

While the presence of bilateral globus pallidus hyperintensities is not pathognomic of any of the abovementioned entities, careful evaluation of the history can rule out most of the acute causes such as carbon monoxide poisoning, methanol poisoning and

acute hypoxia. The remaining conditions are mostly more insidious in presentation. Out of these, Leigh's disease mainly involves the putamen, along with the globus pallidus, caudate, thalamus, brainstem and white matter. Mitochondrial cytopathies affect the basal ganglia and the cerebral cortex in the form of infarction. In leucodystrophies such as Canavan's disease, the involvement of cerebral white matter is a predominant finding, with or without basal ganglia involvement. In other conditions, such as maple syrup urine disease, metachromatic leucodystrophy, methylmalonic acidemia and other lactic acidemias, correlation of the MR imaging should be done as well as a biochemical profile and a muscle biopsy, if necessary. The presence of a sweet breath odour on clinical examination in a young child is also an important clue for the diagnosis of glutaric aciduria type II.

Knowledge of the patients' history, MR findings and their differential diagnoses can help in differentiating the acute causes of bilateral globus pallidus hyperintensities from chronic causes, followed by treatment or prognostication of the latter group of diseases.

Defective neuronal proliferation and migration *in utero*, especially in the temporal lobes, results in hypoplasia. Symmetrically enlarged CSF spaces in the anterior temporal fossae and fronto parietal extra axial (subdural) spaces are also observed. There is a concomitant hypomyelination of the corpus callosum and focal cortical dysplasia with heterotopias. MRS of this encephalomyopathy may show elevated lactate levels and an abnormally high choline-creatine ratio, indicating dysmyelination in the brain. Low phosphorous levels presented in the muscle point to a low energy state with mitochondrial dysfunction.⁽³⁾

Biochemical assessments have shown profound nonketotic hypoglycaemia, metabolic acidosis and organic (dicarboxylic) aciduria with inconsistent combinations of organic acids, including short chain volatile acids (isovaleric, isobutyric, 2-methylbutyric), glutaric, ethylmalonic, 3-hydroxyisovaleric, 2-

hydroxyglutaric, 5-hydroxyhexanoic, adipic, suberic, sebatic and dodecanedioic acids.⁽³⁾ Liver biopsies can reveal fatty metamorphosis, while muscle biopsies may show vacuolar myopathy with lipid accumulations. A high-calorie diet that is low in fat and protein, along with oral supplements of L-carnitine (100 mg/kg per day) and riboflavin (100 mg/day) has resulted in significant improvement in this lipid myopathy.

REFERENCES

1. Przyrembel H, Wendel U, Becker K, et al. Glutaric aciduria type II: report on a previously undescribed metabolic disorder. *Clin Chim Acta* 1976; 66:227-39.
2. Liang WC, Tsai KB, Lai CL, Chen LH, Jong YJ. Riboflavin-responsive glutaric aciduria type II with recurrent pancreatitis. *Pediatr Neurol* 2004; 31:218-21.
3. Shevell MI, Didomenicantonio G, Sylvain M, et al. Glutaric acidemia type II: neuroimaging and spectroscopy evidence for developmental encephalomyopathy. *Pediatr Neurol* 1994; 12:350-3.
4. Gordon N. Glutaric aciduria types I and II. *Brain Dev* 2006; 28:136-40.
5. Frerman FE, Goodman SI. Nuclear-encoded defects of the mitochondrial respiratory chain, including glutaric aciduria type II. In: Scriver CR, Beaudet AL, Sly WS, Valle D, eds. *The Metabolic and Molecular Bases of Inherited Disease*. 7th ed. New York: McGraw-Hill, 1995:1611-29.
6. Barkovich AJ. Toxic and metabolic brain disorders. In: Barkovich AJ, ed. *Pediatric Neuroimaging*. 2nd ed. New York: Raven Press, 1995: 55-105.
7. Ho VB, Fitz CR, Chuang SH, Geyer CA. Bilateral basal ganglia lesions: pediatric differential considerations. *Radiographics* 1993; 13:269-92.
8. Govaert P, Lequin M, Swarte R, et al. Changes in globus pallidus with (pre)term kernicterus. *Pediatrics* 2003; 112:1256-63.
9. Durak AC, Coskun A, Yikilmaz A, et al. Magnetic resonance imaging findings in chronic carbon monoxide intoxication. *Acta Radiol* 2005; 46:322-7.
10. DiPaolo DP, Zimmerman RA, Rorke LB, et al. Neurofibromatosis type I: pathologic substrate of high-signal-intensity foci in the brain. *Radiology* 1995; 195:721-4.
11. Sefidbakht S, Rasekhi AR, Kamali K, et al. Methanol poisoning: acute MR and CT findings in nine patients. *Neuroradiology* 2007; 49:427-35.
12. Sacher M, Fatterpekar GM, Edelstein S, Sansaricq C, Naidich TP. MRI findings in an atypical case of Kearns-Sayre syndrome: a case report. *Neuroradiology* 2005; 47:241-4.